

Brought to you by

®

mats

www.mathewsons.com





Shuttering Plywood

Available sizes: 2440mm x 1220 mm
Thickness: 12mm, 15mm, 18mm, 25mm.



Commercial Plywood

Available sizes: 2440mm x 1220 mm
Thickness: 6mm - 18mm



Fiber Cement Board

Size: 2440mm x 1220mm
Thickness: 4.5mm, 6mm, 9mm,
12mm, 18mm



Threaded Bar

Material: GI SS 316, SS 304
Specification as per the customer needs



Flat Bars

The material is available in various sized and in SS grade 304 and SS 316 according our customers' requirements.

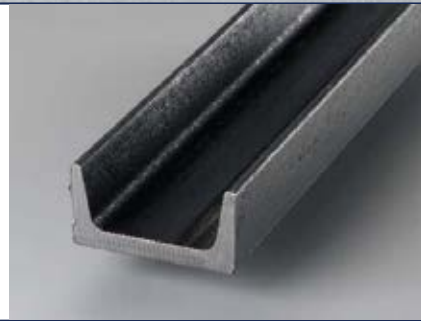


Brackets

The material is available in various sized and in SS grade 304 and SS 316 according our customers' requirements.

**U Channel**

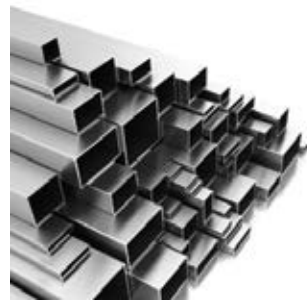
The material is available in various sized and in SS grade 304 and SS 316 according our customers' requirements.

**C Channel**

The material is available in various sized and in SS grade 304 and SS 316 according our customers' requirements.

**L Angle**

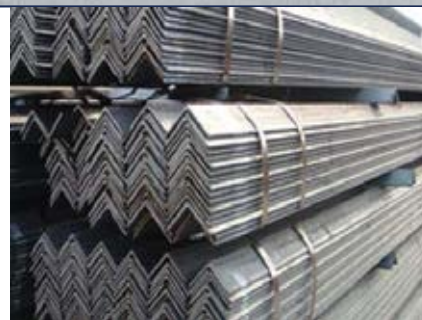
The material is available in various sized and in SS grade 304 and SS 316 according our customers requirements. Thickness: 2mm to 10mm

**Rectangular Hollow Section**

The material is available in various sized and in SS grade 304 and SS 316 according our customers requirements. Thickness: 2mm to 10mm

**Beams**

The material is available in various sized and in SS grade 304 and SS 316 according our customers requirements. Thickness: 2mm to 10mm

**MS Angle**

The material is available in various sized and in SS grade 304 and SS 316 according our customers requirements. Thickness: 2mm to 10mm

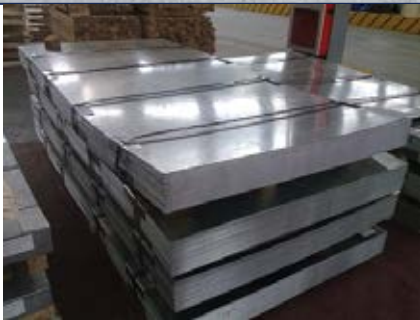
**Scaffolding Props**

Outer pipe dimension	50 mm
Length	2.4 m
Wall thickness	3.2 mm
Inner pipe dimension	40 mm
Length	3.9 m
Wall thickness	2.5 mm

**Swivel Couplers**

Available quality:

- 1) 680-690g per piece
- 2) 725-740g per piece

**GI Sheets**

The material is available in various sized and in SS grade 304 and SS 316 according our customers requirements. Thickness: 2mm to 10mm

**Brass Hinger**

The material is available in various sized according our customers requirements. Beraing / Butt / Double Steel

**Water Storage Tanks**

The material is available in various liters according our customers requirements. 200 LTRS to 1000 LTRS

**PVC Pipes**

UPVC Pipes in size ranging from 20mm to 315mm in pressure classifications starting from 2.5 kg/cm² to 15 kg/cm² offered in white and grey. Apart from UPVC plumbing pipes, threaded UPVC pipes also in white and grey, and drainage pipes offered in white, grey, red, coffee brown, blue and green.



PVC Channels

Size: 35 / 38 mm, 25 / 32 mm
20 / 25 mm, 12 / 20 mm
Length: 2 metre



Conduit Pipes & Fittings

Conduit Pipes in size ranging from 16 mm to 32 mm. They are classified into four categories - Heavy, Medium, Light and Concrete Special.



PVC Hose Pipes

Long lasting
Easily available
Corrosion resistant



Flexible Corugated Conduit Pipe

Features : Non - flammable, Non-Corrosive, Flexible and Easy to Install Note : PVC Glands for these Conduits are available.



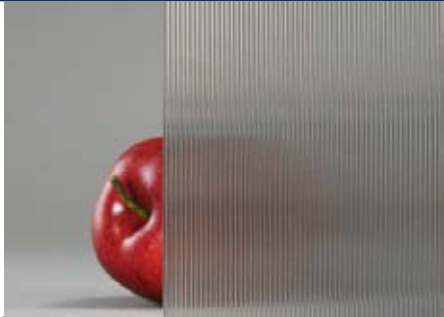
Coir Rope

Type: 2 ply, 3 ply & 4 ply
Size: 5 - 25 mm
Twist type: Double twist, Triple twist, Four-Twist, Single-No Twist
Colour: Light Brown

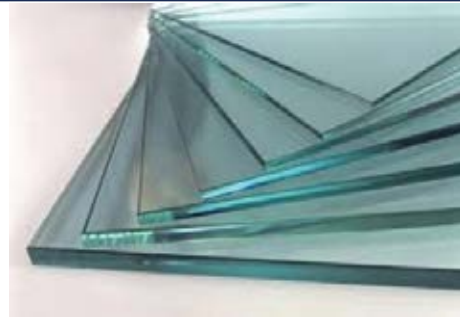


Coco Peat Blocks

Weight: 4.5 to 5 kg
Volume: 70-85 liters after Reconstitution
Moisture (%): 15-20
Organic matter (%): 90 above
Foreign matter (%): 2-5
Water holding capacity: >700
pH: 6.5 - 7.2 / **E.C (ms/cm):** <0.7

**Ribbed Glass**

Ribbed glasses are available on two variants: Thin and Wide ribbed. It can add incredible depth and beauty to your interiors and add privacy, movement, and create ambiance. We provide all type of ribbed glasses to our clients with better quality.

**Toughened Glasses**

Toughened glass is strong glass which has low visibility. It is available in all thicknesses and when it is broken it forms small granular chunks which are dangerous. This is also called as tempered glass. This type of glass is used for fire resistant doors, mobile screen protectors etc.

**Float Glass**

Float glasses are available from 2mm to 20mm thickness ranges. They have a weight range of 6 to 36 kg/m².

**Laminated Glass**

Laminated glass is the combination of layers of normal glass. So, it has more weight than normal glass. It has more thickness and is UV proof and soundproof.

**Concrete Pump**

Max. no of strokes: 25/Per min
Pumping Cylinder, dia X strokes: 180X1200mm
Capacity of charging hopper: 600Liters
Max. horizontal palcing distance:250M

**Concrete Mix**

Wheel Type: 10/7CFT, 7.5CFT, 5CFT
Stand Type: 10/7CFT, 7.5CFT, 5CFT, 3CFT



Tower Crane

Certificate: CE, ISO
Max Load: 6(8)t / Jib Length: 50m
Tip Load: 2t / Standing Height: 45m
Height with anchoring: 160m
Mast Section: 1.837X1.837X2.8m



Block Making Machine

Prod. Per Strike: 50-60 Cycle Per hr
360 Blocks Max. Per hr
6 nos Per Cycle
Wheels: 400-8



Bunk House

Labour Camp
Office
Meeting Hall
Plug & Play Section



Material Lift

Winch Type
Capacity: 2000Kg
Operation Capacity: 2000Kg+25%overload



Tractor

Highly Fuel Efficient, Simpsons S325
Dual Clutch with Classic Pedal Operation
Manual Steering



Packing Machine

6H.P Kirosker Cir Cooled Diesel Eng.
Base 125mmX65mm Back Axel: 100mmX50mm
Front AxelL 75mmX40mm Wheel Type
27 LPM, Drum: 22mm Thickness



Excavators

Known as M-Series
Improved performance and productivity



Diesel Concrete Cutter Machine

Improved performance and productivity
Ideal for craftman and carpentry



Diesel Concrete Cutter Machine

Well balanced machine
Water cooled Diesel Eng.
Improved blade guard system



Pallet Trolley

Capacity: 1500-5000 kg
Width of each fork: 160mm
Seer wheel: 180*50/52
Load wheel: 80*70



Tractor

Highly Fuel Efficient, Simpsons S325
Dual Clutch with Classic Pedal Operation
Manual Steering



Packing Machine

6H.P Kirosker Cir Cooled Diesel Eng.
Base 125mmX65mm Back Axel: 100mmX50mm
Front Axell 75mmX40mm Wheel Type
27 LPM, Drum: 22mm Thickness

**Skid Steel Loader**

Automatically activated glow plugs
Auxiliary Hydraulics
Backup alarm and More
We also work with customer requirements
and specifications

**Wood Planner Machine**

The new Planner/Joiners with 520 mm working width, professional, massive and compact, for a high-flexible production; ideal for the demanding craftsman and carpentry.

**Electric Concrete Cutter**

Prime Mover: Electrical Motor
Power: 30 HP
Blade Sizes: 600 mm (24") To 1200 mm (48")
Standard Shaft: 100 mm dia with 300 mm dia flanges
Weight: 400 Kgs (Approx)
Size: 1200 mm x 600 mm x 1200 mm

**Cranes**

Lifting capacities of Hoist range from 250 kg to 20 Ton capacity.

**Fork Lift**

According to our customer requirements.

**Packing Machine**

6H.P Kirosker Cir Cooled Diesel Eng.
Base 125mmX65mm Back Axel: 100mmX50mm
Front Axell 75mmX40mm Wheel Type
27 LPM, Drum: 22mm Thickness

**CSK Philips Self Tapping Screw**

Diameter	4mm - 75mm (2.9# To 6.3#)
Length	8mm - 100mm
Head Type	(AB) Type & (B) Type
Material	Carbon Steel /S.S.202/ S.S. 304 / 316

**CSK Slotted Self Tapping Screw**

Diameter	4mm - 75mm (2.9# To 6.3#)
Length	8mm - 100mm
Head Type	(AB) Type & (B) Type
Material	Carbon Steel /S.S.202/ S.S. 304 / 316

**Pan Philips Head Self Tapping Screw**

Diameter	4mm - 14mm (2.9# To 6.3#)
Length	8mm - 100mm
Head Type	(AB) Type & (B) Type
Material	Carbon Steel /S.S.202/ S.S. 304 / 316

**Pan Slotted Head Self Tapping Screw**

Diameter	4mm - 14mm (2.9# To 6.3#)
Length	8mm - 100mm
Head Type	(AB) Type & (B) Type
Material	Carbon Steel /S.S.202/ S.S. 304 / 316

**Truss Trox Head Screw**

Diameter	3mm - 6mm dia
Length	6mm - 60mm
Head Type	BSW MM UNC UNF
Material	Carbon Steel /S.S.202/ S.S. 304 / 316

**Hex Head Self Drilling Screw**

Diameter	M02 - M33
Length	3mm - 200mm
Head Type	Hex Flange Head
Material	Carbon Steel /S.S.202/ S.S. 304 / 316



Dry Wall Screw

Diameter	4mm - 14mm (2.9# To 6.3#)
Length	8mm - 100mm
Head Type	(AB) Type & (B) Type
Material	Carbon Steel /S.S.202/ S.S. 304 / 316



Hex Nut & Square

Diameter	3mm - 6mm & BSW 5/32,3/16,1/8,1/4
Thread Type	BSW, MM, UNC, UNF
Material	Carbon Steel /S.S.202/ S.S. 304 / 316



Hex Bolt

Size	M02 To M33
Length	3mm - 200mm
Head Type	HEX
Material	Carbon Steel /S.S.202/ S.S. 304 / 316



Washer

Size	M022 To M33
Length	3mm - 200mm
Material	Carbon Steel /S.S.202/ S.S. 304 / 316



Hex Head Coach Screw

Diameter	M02 To M33
Length	3mm - 200mm
Head Type	HEX Head / Square Head
Material	Carbon Steel /S.S.202/ S.S. 304 / 316



Threaded Bars

Diameter	M8, M10, M12, M16
Length	Upto 2 Meter
Material	Carbon Steel /S.S.202/ S.S. 304 / 316, GI, HDGI

**Anchor Bolt**

Diameter	M6, M8, M10, M12
Length	Standard
Head Type	Hex Head
Material	Carbon Steel /S.S.202/ S.S. 304 / 316

**Chip Board Screw**

Diameter	4g, 5g, 6g, 7g, 8g, 10g
Length	16mm - 100mm
Head Type	CSK Head
Material	Carbon Steel

**Bi-Metal Hex Self Drilling Screw**

Diameter	10g, 12g, 14g
Length	20mm - 100mm
Head Type	Hex Flange Head
Material	Stainless Steel 304 + Carbon Steel SCM 435

**Ruspert/Xylan Coated Hex Self Drilling Screw**

Diameter	10g, 12g, 14g
Length	19mm - 200mm
Head Type	Hex Flange Head
Material	Carbon Steel

**Epoxy Coated Hex Self Drilling Screw**

Diameter	10g, 12g, 14g
Length	19mm-160mm
Head Type	Hex Flange Head
Material	Carbon Steel

**CSK Self Drilling Screw**

Diameter	6g, 7g, 8g, 10g
Length	19mm-75mm
Head Type	Countersunk Head(Ribbed)
Material	Carbon Steel / S.S. 304 / 316



Hex Nut

Size	M2 to M33
Material	Carbon Steel, SS



MATS Self Tapping Screw

Specification	Hexagon head, Twin lead thread
Size	5.5x45mm, 5.5x55mm



PAN Self Drilling Screw

Diameter	6g, 7g, 8g, 10g
Length	13mm - 75mm
Head Type	PAN Head
Material	Carbon Steel / S.S. 304 / 410



MATS Drywall Screw

Specification	Black phosphated, + Head, Harden fine thread or coarse thread
Material	3.5x19mm, 3.25x25mm, 3.5x32 mm 3.5x40mm, 3.25x50mm



Zinc Plated Hex Self Drilling Screw

Diameter	10g, 12g, 14g
Length	19mm - 200mm
Head Type	Hex Flange Head
Material	Carbon Steel



Self Drilling Screw

Self Drilling Screw are available in a various grades, finishes and sizes.

**Flat (CSK) Head Socket Machine Screw**

Diameter	3mm To 6mm dia
Length	6mm - 60mm
Thread Type	BSW MM UNC UNF
Material	Stainless Steel and as per customer requirements Standards :DIN, ISO

**Buton Head Socket Machine Screw**

Diameter	3mm To 60mm dia
Length	6mm - 60mm
Thread Type	BSW MM UNC UNF
Material	Stainless Steel and as per customer requirements Standards :DIN, ISO

**Six Lobs Machine Screw**

Diameter	3mm To 6mm 2.9# to 6.3mm
Length	8mm - 75mm
Material	Stainless Steel and as per customer requirements Standards :DIN, ISO

**Slotted Cheese Head Machine Screw**

Diameter	3mm to 6mm dia
Length	3mm - 60mm
Thread Type	BSW MM UNC UNF
Material	Stainless Steel and as per customer requirements Standards :DIN, ISO

**PAN Combination & Washer Machine Screw**

Diameter	6MM To 6MM dia
Length	3mm - 60mm
Thread Type	BSW MM UNC UNF
Material	Stainless Steel and as per customer requirements Standards :DIN, ISO

**MATS Rivets**

Specification	Steel Alloy Blend, Rivets Open End
Size	1/8 x 1/2", 1/8 x 3/4", 5/32 x 1/2"



www.mathewsons.com
since 1978

Mathewsons Export & Import Pvt. Ltd. (Corporate Office)
Mathewsons Building, Near St. Antony's Church, Kaloor, Cochin - 682 017, India
Tel : +91(484) 2530104, 2530833
E-mail : msa@mathewsons.com | exim@mathewsons.com